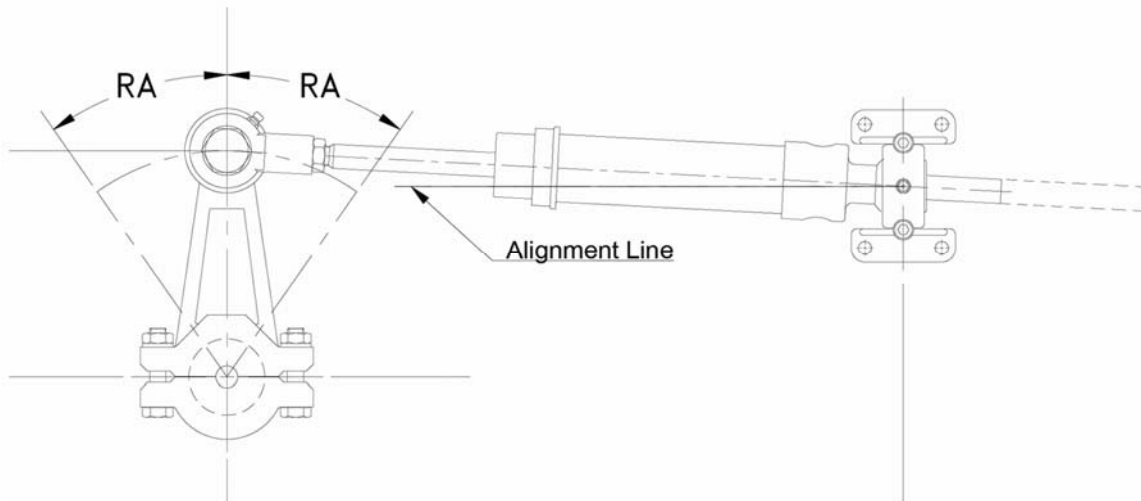


## Model 7040 1.5" I.D. Steering Cylinder



The engineering features and simple design make this a very durable cylinder. All materials used are non corrosive. The cylinder tube is made from brass. The end caps, trunion mount and the rod ball end housing are made from bronze and the cylinder rod is chrome plated stainless steel. The fasteners, bleed fittings and grease fittings are of stainless steel. Normally the cylinders are supplied with medium duty neoprene seals which require minimum friction (Pleasure craft). Heavy duty urethane seals which would give maximum seal life are also available but they also provide more friction.



The cylinder is shown installed in the straight ahead position. Please note that the cylinder is offset in this position and will come into alignment at the hardover positions when the greatest torque is applied to it.

## Ordering Information

### Model Designations:

<b>B</b>	Balanced cylinder	<b>7.5</b>	With 7.5" stroke
<b>U</b>	Unbalanced cylinder	<b>10</b>	With 10" stroke
<b>X</b>	Medium duty seals		

### Example

Balanced steering cylinder with 7.5" stroke. The ordering number is: **7040-B7.5**

### Note

Other strokes available upon request.

### Weight

7.9 lbs. (3.6 kg) 7.5" stroke

8.6 lbs. (3.9 kg) 10" stroke

### Materials

Brass tube and piston. Endcaps and bearings silicone bronze. Piston rod stainless steel and hardchromed

### Max. Pressure

1500 P.S.I. (103 bar)

### Effective Piston Area

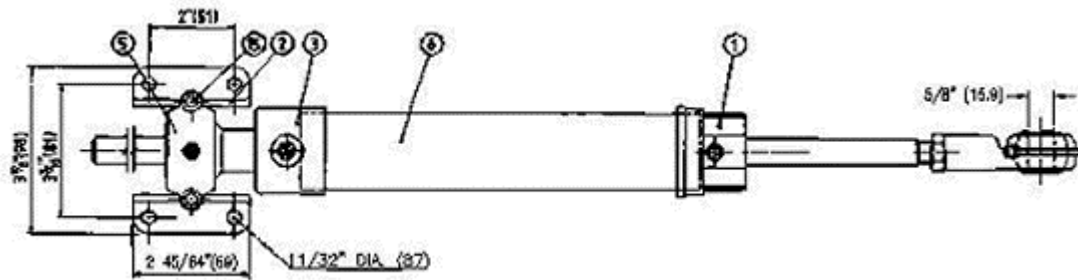
1.46 in<sup>2</sup> (9.41 cm<sup>2</sup>)

### Rudder angle (RA) 35°

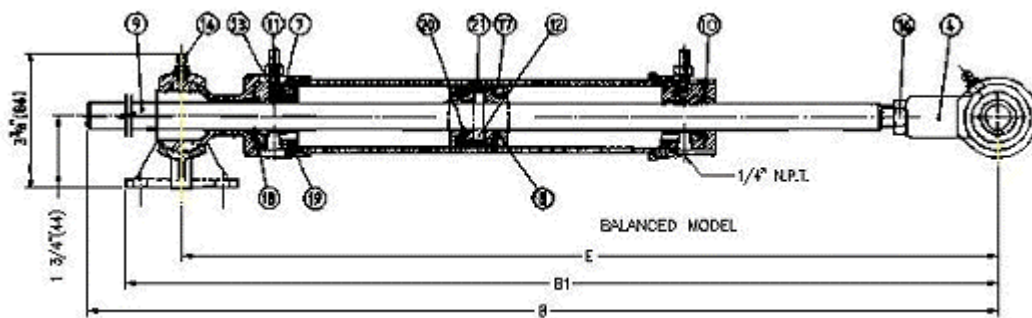
Torque		Stroke		Displacement		A		B		C		D		E	
ft.lbs	kgm.	in.	mm.	in <sup>3</sup>	cm <sup>3</sup>	in	mm	in	mm	in	mm	in	mm	in	mm
652	90	7.5	191	11	180	3.75	95	22.0	560	6.54	166	5.95	151	19.5	495
								4						0	
869	120	10	54	14.6	239	5	127	27.0	687	8.72	221	7.93	201	23.2	591
								4						5	

## Dimensions and Parts

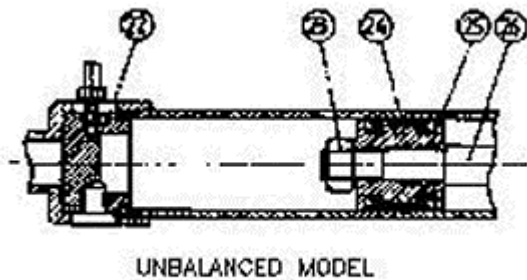
### Balanced Model Top View



### Balanced Model Cut View



### Unbalanced Model



ALL DIMENSIONS IN INCHES (MM)

ITEM	QTY. *	QTY. **	PART NUMBER	DESCRIPTION
1	1	1	7040-0001	End Cap
2	1	1	7040-002+	Trunnion Foot
3	1	1	7040-0003+	Trunnion End Cap
4	1	1	7040-0004	Rod End
5	1	1	7040-0005+	Trunnion Cap
6	1	1	7040-0006***	Cylinder Tube

Model 7040 1.5" I.D. Steering Cylinder

7	2	1	7040-0007	Rod Guide
8	1		7040-0008	Piston
9	1		7040-0009***	Piston Rod
10	2	1	7040-0010	Retaining Washer
11	2	2	7040-0011	Bleeder Screw
12	1	1	7040-0012	Pin
13	2	2	1301-0005	Ball
14	2	2	1501-0301	Grease Nipple
15	2	2	1002-1120	Socket Head Screw
16	1	1	1022-0264	Jam Nut
17	2	2	1102-2026	Urethane "U" Cup (Standard)
17	2	2	1102-0026	Neoprene "U" Cup (Option X)
18	2	1	1102-2006	"U" Cup
19	2	2	1101-0125	"O" Ring
20	1		1101-0016	"O" Ring
21	1	1	7040-0013	Wear Ring
22		1	7040-0107	Rear End Cap
23		1	1022-0164	Nut
24		1	7040-0108	Piston
25		1	1101-0014	"O" Ring
28		1	7040-0109***	Piston Rod

- \* Balanced cylinder
- \*\* Unbalanced cylinder
- \*\*\* Specify stroke when ordering
- + Must be ordered as a set